



The Valley and East Coast Voice Inc. \$1

valleyvoice.com.au

Established 1968 Vol 47.12 October 9th 2014
The deadline for 47.13 is 5pm October 20th 2014

Council protocol for responding to matters/questions raised in printed publications



I would like to advise that Council does not go searching through publications e.g. Valley Voice, Coastal Column or Fingal Focus identifying questions raised or matters of concern to the community.

By all means, print your articles in your desired publication, however if you would like Council to formally respond please forward same to Council for the opportunity for the matter to be investigated and a formal response given.

Sarah Schmerl **MAYOR**



Fingal Railway Station restoration plans,
 details in the GET newsletter on page 16



New Fire Brigade team at Rossarden,
 more in the AMIC newsletter on page 13

Nearly \$28m over five years for Lyons roads page 10

List of 2014 Break O'Day Local Government Election candidates page 12

Historic Plaques being installed around Avoca page 13

East Coast RC Flyers News - October 2014 page 19

Signing of the Refuge Welcome Zone Declaration page 22

Three great BODRA workshops coming up page 23



State Government Funding Announcement – St Helens Indoor Ball Court Facility

article on page 9

From left: Matt Bennell, Principal St Helens District School, Jake Ihnen, Building Services Coordinator Break O'Day Council, Anita Lewis, Business Manager St Helens District School, Mayor Sarah Schmerl, Clr Margaret Osborne OAM, Guy Barnett MP, Mark Shelton MP, Bob Hoogland, Acting General Manager Break O'Day Council and Dan Roden, St Helens Basketball Association

Meet the candidates at St Marys Town Hall - October 11th 2014

AMIC Market - October 18th 2014

BODRA Spinning workshop - October 25th, 26th 2014

Walk for Prems 2014 - October 26th 2014

Community Groups

AA St Helens (Alcoholics Anonymous) meet Wednesdays 8pm at St Paul's Anglican Church hall, St Helens. Call Murdoch on 6376 3335.

AA St Marys (Alcoholics Anonymous) meet Fridays 7pm at Holy Trinity. Call Mick or Shirl 6372 2909.

Al Anon St Helens (Family Group) meet 2pm Sundays at St Paul's Anglican Church Hall St Helens. Call Anne or John on 6376 4270 / Rose on 6376 3335.

Beaumaris Swap Markets are held monthly on the 1st Sundays at Beaumaris Park from 11-1pm. Plastic bag free, gold coin donation per stall (bookings required). Call Laura on 6372 5687.

BINGO at the Cornwall Hall Mondays at 7pm, 2 jackpots each week. All welcome.

Break O'Day Regional Arts meet monthly on the 1st Tuesday in the Supper Room at St Marys Community Hall, 4pm. **RAYC** Regional Arts Youth Company for school aged children is on Thursdays 3.30-5pm. Session cost \$5 or \$40 p/10 week term. All welcome. Michelle on 0407 046 865. e: bodregionalarts@gmail.com

The B.O.D. Stitchers meet each Friday 10-3pm at the Neighbourhood House Bungalow in St Helens.

The Break O'Day Woodcraft Guild Inc. meet monthly on the last Thursday at 11am in the Goods Shed behind the St Marys Railway Station.

The Chocolate Shop Singers meet Thursdays 5pm at the Mt Elephant Fudge shop St Marys for informal and fun singing. Everyone welcome.

The Cornwall Community Development Group Inc. hold their general meetings on the 1st Tuesday every month. Hall hire available, please contact Raz or Deb on 6372 2261.

East Coast Community Transport, Jan Saunders, Community Hall, 23 Main Street, St Marys. 6372 2137.

The Falmouth Community Centre contact for booking club facilities is Cherrie Schier on 0417 887 941.

The FVNH Op Shop is happy to receive pre-loved clothing and goods weekdays 9-3. Donations can be collected on Mondays or items can be left at the Centre. Come along, check it out and pick up a bargain. Deb Speers for FVNH.

Gone Rustic Studio + Gallery 37 Main Street St Marys. **Operation Cover-up** meet on the 3rd Fridays monthly from 11-2, creating quilts and knitwear for those in need locally and overseas. \$5 donation towards quilt wadding; BYO lunch, cuppa included.

Greater Esk Tourism meet 7pm at Fingal Neighbourhood House on the 2nd Monday of each month, unless otherwise notified. 0412 425 666.

Meals on Wheels meeting dates for 2014: 21/8/14, 20/11/14, held in the Community Health Centre St Marys. Lundy Vosper, Secretary. 0488 384 344

The Scamander and Beaumaris Community Development Association meet monthly on the 3rd Wednesday at 7pm in the Scamander Sports Complex.

Scamander Garden Club meet monthly on the 3rd Monday at 1.30pm in the Scamander Sports Complex. Enjoy sharing garden activities. Call Val on 6372 2762.

The St Helens Walking Group walk each Wednesday and 3rd Saturday monthly. New members are most welcome. Call Healthy House 6376 5242 or Bryan Edhouse 6376 3439 for info.

St Marys/Falmouth Playgroup is held 10:30-12:30 each Wednesday at the Falmouth Community Centre. Join us for only \$3 per family in a relaxed and friendly atmosphere for all the family. Tash Speers 0419 591 905 / Amy Faulkner 0417 152 337.

St Marys Hospital Auxiliary meet monthly on the 1st Monday at 2pm in the St Marys Community Health Centre.

St Marys Ladies' Midweek Tennis meet 9.30am each Wednesday. New players & beginners welcome. Child minding included - a lovely safe place to bring toddlers while you play. Karon 6372 2382 or Dana 6372 2033.

St Marys Markets are held monthly on the 1st Saturday at the St Marys Community Hall 9-1pm. Christmas may see a second market in the month - stay tuned for updates. Bookings or queries call Michael Smith (BODRarts) on 6372 2056 or 0407 046 865.

St Marys Online Access Centre, 23b Main Road St Marys. Mon to Fri 9.30-4.30 Sat 11-2. Ph 6372 2005.

The St Marys Op Shop (School Association) is open 10-4 weekdays and Market Saturdays 10-12.30. We are happy to receive ALL pre-loved items excluding electrical. SMALL donations can be left at the St Marys Newsagency. contact Janet Drummond - Coordinator 0404 562 320 for assistance. Check out the Facebook page

St Patricks Head & Esk Valley Historical Society Inc. meets every 2nd month on the 3rd Wednesday, 3pm at various venues. Barry 6372 2575 (aulich@bigpond.com) or Jim 6372 2127 (jimhaas@bigpond.com) www.fingalvalleyhistory.com

Stallholders' Market Inc. is a nfp organisation that holds markets on Saturdays 8-12 in the Portland Hall St Helens. e: sthelenmarket@yahoo.com.au

Suncoast Singers meet every Friday, 10am in the Catholic Hall Cecilia Street, St Helens. New singers welcome ... if you can talk, you can sing. Call Mary-Anne Wadsworth on 6376 2969.

The Tasmanian Lymphoedema Centre Inc meet monthly on the 3rd Monday at 10am in the St Marys Community Health Centre, Day Care Room.

The next Council meeting will be held on Monday October 20th 2014 at 10am in the Council Chambers, Georges Bay Esplanade, St Helens. Minutes from Council meetings are available online.

Editor: Wendy Dawson
e: wdawson@valleyvoice.com.au
m: 0403 430 452
web: valleyvoice.com.au

Advertising rates for 2014:

- ◆ Business card ads \$15 ◆ ½ page ads \$40
- ◆ Intermediate ads \$18 ◆ Full page ads \$65
- ◆ ¼ page ads \$25

Community announcements are free. Private classified ads are free for two issues. Annual posted subscriptions are \$50.60 and annual online subscriptions are \$20.

Articles for publication may be left at the St Marys Pharmacy, posted to POB 230 St Marys 7215 or emailed. For online advertising, contact the Editor.

For Sale

Point of lay **chooks**, Isa Brown x Australorp, make exceptionally good layers. \$35 each. And 1.5 tonne petrol Mitsubishi petrol **forklift** in good order, 2415 hours. Ph Garry 0417 331 536

New Woodland Grey **Colorbond Iron**, various lengths to 4.8m. Also ridge-capping and valleys available. \$10 per metre. 0412 677 410

1997 VS Holden **Commodore** Executive auto station wagon, good condition. \$1800 ono. 0437 397 219

Moo poo, any quantity, finely screened. Trailer load \$40, large trailer loads \$50-\$60, truck loads delivered. Ph Norm. 6372 2380

Round bales, garden mulch or bedding, \$50 ea, free delivery in St Marys area. 0407 944 158



Bar stools \$25 ea, 2 left. 6384 2355

Westinghouse 221 litre **2 door fridge/freezer**, very good condition \$100. Pine **roll top desk**, excellent condition \$125 ono. **2 metal and glass coffee tables** - rectangle \$10, square \$5. Ph Len Miles 6372 2285

Wheat, bread grade. 5kg bag \$10, can deliver F.O.C. by arrangement. 6372 2626

Land Rovers X 2 (Fingal) 1996 Diesel (300 TDI) 6 months rego \$4,500. and 1992 Petrol (3.5 V8) 6 months rego \$2,750. Ph Bill 0428 980 766

Holden VT Commodore Executive Auto V6 '97 sedan good condition, locally owned with history, 6 months rego \$2,500 ono. Ph 0403 430 452

4 burner BBQ with swap gas bottle, good condition \$50. Pick up only. **Cooper Home Brew kit** with 65 plastic bottles \$50 0474 228 568

Wanted

Would anyone have any old **National Geographics** they don't want anymore? Call Bob on 0428 345 265 if you can help.

Bed settee, two seater. Ph 0407 944 158

Community Notices

The **Rossarden and Friends Kids Christmas Group AGM** is to be held Tuesday October 21st, 3pm at the Avoca Roadhouse

Thanks to the **Break O'Day Council** for their kind donation of a multi-function printer to the Valley and East Coast Voice Inc., and to Glyn Johnson for transporting it from St Helens to St Marys. Editor

Safe Food Handling Courses

Council is once again holding this course in St Helens on Wednesday October 15th and in St Marys on Thursday October 16th 2014

Session Times: Wed 10am, 12pm, 3pm and 5pm, Thurs 5.30pm For more details please contact Rachel Lewis on 6376 7900 or rachel.lewis@bodec.tas.gov.au

The **St Marys District Hospital Support Association Inc** will hold their **Annual General Meeting** on Monday October 13th 2014 at the Community Health Centre. All welcome.

Len Miles, President, 6372 2285

New community infrastructure funding available

Applications are now open for round one of the Federal Government's new, landmark \$1b National Stronger Regions Fund.

The new fund will target projects that deliver priority development and small scale community infrastructure nationally. Federal Lyons MP Eric Hutchinson said that the new fund was a huge opportunity for local community projects across Lyons to get their share of this major government investment in infrastructure.

"The fund will support a range of local and regional development initiatives that are designed to spur on economic growth - from freight and transport projects to convention centres and major multi-purpose sports and community facilities," Mr Hutchinson said. "The Government's focus is on strengthening economies in Australia's most disadvantaged regions and communities by improving productivity, economic opportunity, employment and workforce skills."

The National Stronger Regions Fund will provide local community projects with between \$20,000 and \$10m, covering up to 50% of project costs.

"The fund encourages partnerships with project proponents engaging with the private sector and possibly local and state governments," Mr Hutchinson said. "I urge local communities to get behind the National Stronger Regions Fund to ensure our region gets its fair share of this investment."

Projects seeking funding will be considered in consultation with the Federal Government's National Infrastructure Committee. The guidelines for the National Stronger Regions Fund detail the type of project proposals, how to lodge an application, how assessments will be conducted and critical program dates.

To access the guidelines and to lodge a round one application, go to www.infrastructure.gov.au/nsrf

On this day in 1855 - Isaac Singer patented the sewing machine motor

Community Notices



Fingal Valley Football Club is Gearing Up for a Great 2015 Season

The Fingal Football Club is getting ready for next season – we need nominations for President, Secretary, Treasurer and Players as well as interested people to help out as

Match Managers, Runners, Trainers and Boundary Umpires. The **Annual General Meeting** will be held on Sunday November 16th at 10am at the Fingal Football Club Rooms - all welcome.

Roxy Cowie OAM

Committee Member - Fingal Valley Football Club

Annual Report 2013/2014

Copies of the 2013/2014 Annual Report are now available at the Council Office, Georges Bay

Esplanade, St Helens, on Council's website at www.bodc.tas.gov.au, or you may request a copy be mailed or emailed to you by contacting the office on 6376 7900. Council invites the community to submit comments on the Annual Report for discussion at the Annual General Meeting.

Written submissions should be addressed to the General Manager, PO Box 21, St Helens, 7216 and be received by 5.00pm on Monday 10 November 2014.

Bob Hoogland, Acting General Manager



Letters to the Editor

Dear Editor,

In the last few weeks there has been quite a lot of what can only be described as "white noise" around the issue of refugees.

Unfortunately some very selective cutting and pasting of Council Minutes for distribution via social media has elevated both the confusion and the misinformation within the community.

I feel both sad and angry that anyone who asks about process and detail can be branded a racist.

I am more than a little puzzled at the conduct of those lauded for voting in favour of the "Refugee Welcome" process, most of whom were conspicuous by their absence in the St Marys Hall on Saturday for the public signing of the declaration.

I chose to remove myself from the actual signing ... not because I agree with the behaviour of the Federal Government in this matter ... but rather because I am shocked and appalled at the behaviour of the proponents of the proposed signage within this municipality.

It is not wrong, racist, petty or small minded to ask questions about a proposal put to Council ... it is democracy at work.

Equally it is not wrong of our elected representatives to ask those questions within the chamber ... it is their job.

The "racist, small minded, ill-informed and undemocratic bigots" are those who decline to engage the broader community in an informed conversation about the proposal and all its implications, both positive and negative.

On my return to the hall I was quite shocked to find

myself within a very odd conversation about hijabs; it might have been a plan for the proposers of the "Refugee Welcome" strategy to spend a little energy explaining the social, cultural, spiritual and historical significance of head covering to say nothing of the difference between a burka, a chador, a nijab and a hijab to the broader community ... the information is as easy to cut and paste as the Council Minutes and its dissemination far more productive if anyone is actually serious about the Break O'Day being a welcoming and inclusive place.

Kind regards

Wendy Fowler, St Marys

Dear Editor,

The latest Cagerattler piece asks for responses to the view that this ISIL "Death Cult" cannot be tolerated by Australia and others who are now assisting Iraq's self-defence. For what it's worth, I agree and also note with pleasure that a large majority of Aussies think the same.

But as for the notion that only an idiot would question whether most of our recently arrived Muslims think as that majority does about this bi-partisan policy, we can only hope it's so since we're all just guessing for now. That hope will look better when fewer Muslims, both here and in other Western countries, don't sound so ambivalent about terror attacks such as September 11th.

In recent weeks the AFP uncovered \$20m in donations to Islamist fighters, far more money than a tiny minority of unemployed young males could muster. There have also been repeated suggestions by Muslim leaders here and in New Zealand that Muslim loyalty depends on governments not adopting policies they dislike. Our police, soldiers and even school cadets have lately been warned not to wear their uniforms in public since they might be attacked. Even more strange is that talk shows are discussing whether flying Australia's flag is now provocative in the eyes of a certain minority they hesitate to name. When a majority has to talk and act so cautiously so as not to offend the intolerant, whose country is it?

In France the fast-growing Muslim minority has become a security nightmare, contributing over 800 jihadists to the current war and is also likely to outnumber "traditional" French within three generations. In Britain, a recent study of its 1700 mosques showed only two are following a modernist theology which can fit with liberal democracy, while over 400 won't even allow women to worship there. If anyone ever locates the supposedly moderate majority of Muslim immigrants, it won't be over there.

We mustn't forget, of course, that most of the UN's 50 million "official" refugees are Muslims fleeing Muslim countries, and that some Australian Muslims are now being unfairly taunted or threatened by yobbos. All these deserve to feel safe too, just like us.

That being said, Australia needs to quickly decide if further large-scale Muslim migration is a good idea when the recently arrived group is far more problematic than, say, Buddhist migrants, who number about the same but don't require thousands of police to monitor them or demand the whole nation conform to their values.

There'll be no turning back once a certain tipping point is

Letters to the Editor

reached, short of the deadly civil strife that frequently occurs overseas and which none of us want here.

Lew Bretz, St Marys

Dear Editor,

Councils in Tasmania wish it to be known that Tasmania is a refugee friendly state.

I would like them to justify this statement.

For the state to be friendly it has to fulfil ALL of the refugees needs. Hobart and Launceston may have the infrastructure to fulfil the religious, cultural, and social and welfare needs of refugees, but many regional centres are lacking the infrastructure to cater for the current population.

Are councils suggesting that the refugees give up their cultural differences to fit in with the general population, or are they going to put in place specific infrastructure for the refugees where it is lacking, over the needs of the community?

Neither proposal can be described as being very friendly in the short or long term.

As a separate matter, if councils wish to welcome refugees to the state it would be nice for them to consult the population first.

David Watkins, St Marys

St Marys People Poles Project Update



After a truly exhausting effort we have completed our applications to the Australia Council of the Arts for a 'Projects with Public Outcomes' grant of \$34,650, and to the Tasmanian Community Fund for \$84,000 towards the People Poles Project.

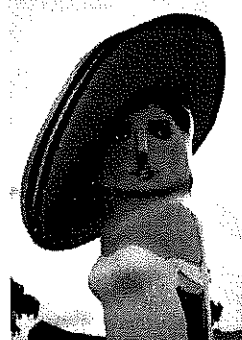
We can only hope for the best and meanwhile get to work on developing the People Poles Project that can make such a difference to St Marys

and really put it on the map!

Meanwhile we really need more people to become involved and work on a plan of action to have one or two People Poles in place by using the funds we have, and by seeking and obtaining additional sponsorship from companies such as coal mines, timber companies and any others.

Ideas welcome!

If you are willing to help put our town on the map as a major tourist destination for Tasmania please let us know: contact peoplepolesproject@bigpond.com or call 6372 2059.



ADVERTISEMENT

Eric HUTCHINSON MP
Federal Member for LYONS



**Working for you locally and
taking your concerns to Canberra**

Perth Office

53B Main Road, Perth TAS 7300 Phone. 03 6398 1115

Brighton Office

205 Brighton Road, Brighton TAS 7030 Phone. 03 6268 0922

f /eric.hutchinson.9212 @hutchinson_eric

www.eric-hutchinson.com.au

Authorised by Eric Hutchinson MP, 53B Main Road, Perth TAS 7300.



Ransley's Appliance Service

POB 136

Scamander Tasmania 7215

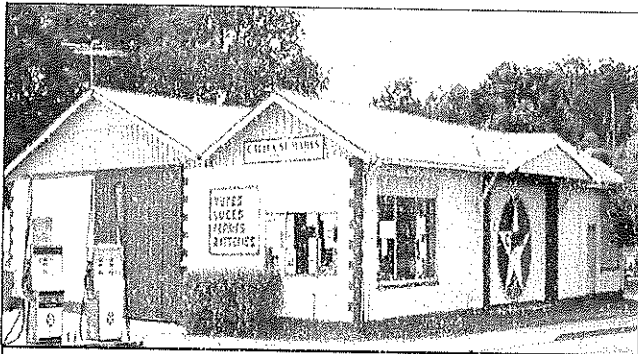
Washing machine **noisy**?

Refrigerator runs **too long**?

Clothes dryer blows **cold air**?

Then you need the service of our technicians.

6372 5307 / 0428 761 811



CALTEX ST MARYS

MECHANICAL REPAIRS & SERVICE

41 Main Street

6372 2335 / 0419 503 109

Fax 6372 2822

EAST COAST GLASS

- Glass repairs
- Shower screens
- Wardrobe doors
- Double glazing
- Aluminium windows
- Security doors



Locally owned and servicing the East Coast.

Call David or Anne Cannon for professional, friendly and reliable service.

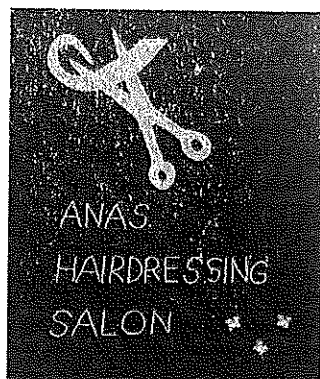
6372 5361

ANA'S HAIRDRESSING SALON

Open Tuesday, Wednesday and Thursday

Qualified waxing and beauty available.

New range of small gifts and GKMBJ hair products available now - Great value!



New season's stock in store now - a complete new range!

46 Main Street St Marys
0448 532 531 - A/H 6372 5497

PHARMACY

Main Street St Marys 7215

Ph 6372 2844 Fax 6372 2874

Pharmacist on duty 5 days a week

Our Kodak machine is up and running, copies from 45¢

Ear Piercing \$27

Piercing, Earrings & Solution to take home. With qualified staff
Bec, Sally and Cassie.

Role of the Titley Shack Reference Group

October 2nd 2014



The role and function of the Titley Shack Reference Group is to advise and provide information to Council on matters pertaining to the management and protection of the Titley Shack, the last remaining shack at the Binalong Bay Gulch, and to ensure that any matters affecting the management and protection of the Titley Shack incorporate the strategies outlined within the Binalong Bay Foreshore Master Plan.

The aims of the Group are to preserve the Titley Shack and its historical value and secondly to identify what the Titley Shack could be used for long term. The group are also looking at having the Titley Shack included on the local Heritage Register to ensure the long term preservation of same.

The Group are unanimous that they would not be averse to some commercial use providing it didn't alter or detract from the historical ambience and layout of the property. Prior to the purchase of the shack, community members expressed an interest in having the Titley Shack developed as a museum showcasing the history of the Binalong Bay area – if members of the community have memorabilia in which they would be prepared to loan to this project, Council would work with the Curator of the St Helens History Room to ensure that a display of artefacts could be developed at the Titley Shack.

The Titley Shack Reference Group have recently been successful in obtaining funding from Break O'Day Council to have the Titley Shack made "habitable" by undertaking remedial works such as the removal of asbestos, replacement of damaged iron, undertaking necessary electrical work, new downpipes and flashing and some internal works such as replacement of ceiling lining.

If you have items that you would be able to provide to Council for the purpose of a display, could you please contact Chris Hughes at Break O'Day Council on 6376 7900 or chris.hughes@bodc.tas.gov.au
For further information please contact Clr Glenn McGuinness on 0419 378 138.

Surf Coast Realty

Ph: (03) 6372 5321



Your Independent, Locally Owned & Operated Real Estate Agency!

- ⇒ Extensive market knowledge & personalised, caring service.
- ⇒ Window displays in Scamander, St Marys, St Helens and Bicheno.
- ⇒ Specialised website & mobile website designed to showcase the wonderful East Coast lifestyle.

If you are thinking of buying or selling, please contact Surf Coast Realty for market advice or an Obligation-free appraisal.

Suite 1/ 158 Scamander Ave, Scamander TAS 7215

Honest . Reliable . Professional

Food tastes better when someone else prepares it because when you prepare your own food, you anticipate its taste and become less hungry for it.



Community Dinner

Holy Trinity Anglican Church Hall St Marys

Saturday 18th October 2014

5.30pm for 6pm



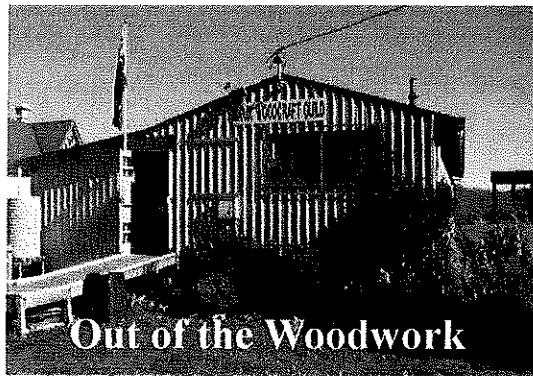
Please bring a side dish or dessert to share

BBQ meats will be provided

RSVP - Kevin on 0427 062 406

or at <https://www.facebook.com/events/775440882548701/>





Out of the Woodwork

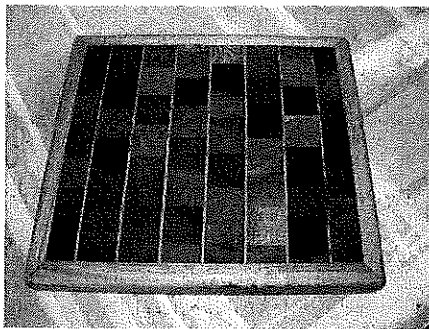
Wendy Brennan, Secretary 6372 2094

www.breakodaywoodcraftguild.weebly.co

www.facebook.com/pages/Break-ODay-Woodcraft-Guild-Mens-Shed/654672894597969

Just a reminder that the Woodcraft Guild will present "Meet the Candidates" at the St Marys Town Hall on the October 11th at 7.30pm. This is a chance for you to meet the nominees and to ask any questions to judge the suitability for their vote. We request that all attendees act with civility. All members wish all the candidates the best of luck.

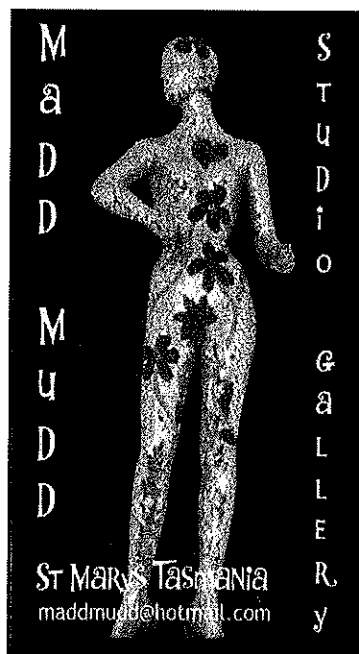
Picture of bread board made by Guild.



The Guild is open every day except Friday and Sunday (depending on volunteers), and other times by appointment.

A man called Paz sneaked into Paris Hilton's 30th birthday party, stole her \$3200 red velvet cake and gave it away to the homeless of Los Angeles.

Notice to people who submit Valley Voice inclusions via email: please check your emails after you have sent your inclusions in case there are any issues that need your response. Editor.



The Say...by Cagerattler



Before I begin this article let me just point out that the suggestions and opinions are in addendum to what is already happening and in no way critical of any of our fantastic community groups. It's a suggestion

that potentially could enhance the great job that GET and other agencies do. In fact, this 'pie in the sky' idea is because of what they already do and is not intended to compete or detract from same.

Yesterday I was in Madd=Mudd, talking to my friend who runs a great outlet there. Also present was a very nice lady, Jo, who fairly recently moved to Fingal and loves it here in the Valley. Jo and her husband came here from the Northern Territory.

Heather was showing us a new brochure that's just been printed and Madd=Mudd had taken the chance to try it out. We got talking about tourist and craft issues in general and we all agreed that in recent times things have gone a long way in this regard; less people were passing through, and more and more were wanting to spend a little time enjoying the Valley of Adventure video - a really good GET and Council initiative. All the main attractions are being covered now really well but I mentioned things like Bare Rock ... Jo asked me how to get there and I couldn't honestly tell her. This then sparked discussion on other places, which led to not only places but sporting and adventure activities, which in turn generated discussion on craft and local history interests.

After a while we'd covered at least a dozen different aspects of making the Fingal Valley a great place to be. To be honest, you'd have to be extremely hard to please not to find something in the Valley to make you want to visit.

Here is the 'Pie in the Sky'. I wonder is there a way we could collate a pretty extensive and easily accessible and updateable database/website for everybody, whether it be for tourists, locals or anyone, to enhance what is already being done but with easy links and contact details for participating locals and groups who wish an active part in such a site.

I'd imagine that with the expertise already around, some willing collaboration from clubs, groups, schools and interest groups, a database/website dedicated to as many different interests as possible would be an added bonus for all.

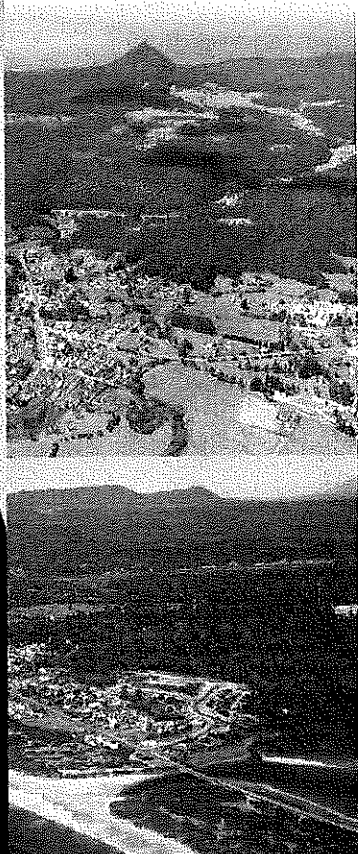
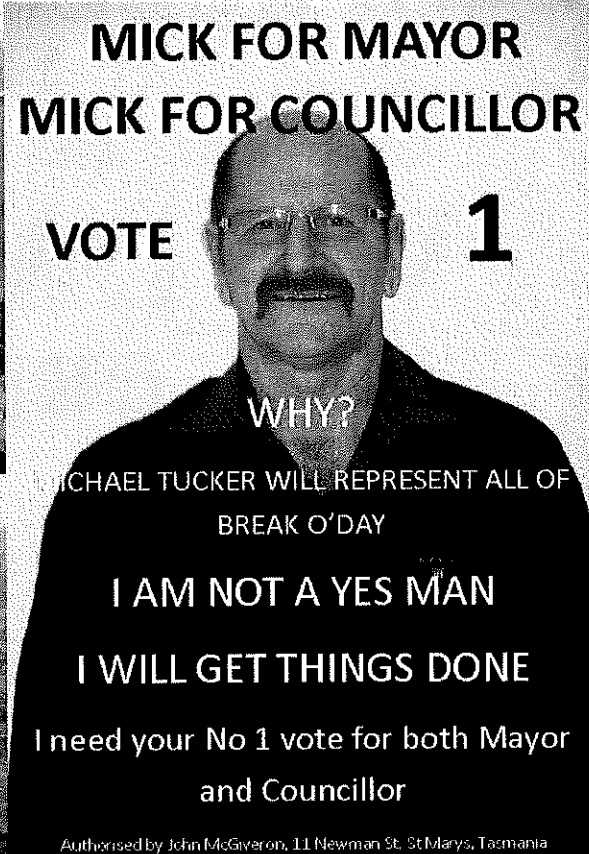

Just as an example for Jo, I could have said ... 'Give Bob a ring or send him an email and he'll be able to tell you all about it...'

Put simply, the amazing work already done by some tremendously talented people within local tourism promotion would only be further enhanced with a database/website and also with the talents in the I.T. field, and after Saturday's off-the-cuff discussion at Madd=Mudd... I wonder is further investigation along these lines feasible or not?

As they say, 'If you don't ask, you'll never know.'

What do you think?

Rod McGiveron



MICK FOR MAYOR
MICK FOR COUNCILLOR

VOTE 1

WHY?

MICHAEL TUCKER WILL REPRESENT ALL OF
BREAK O'DAY

I AM NOT A YES MAN
I WILL GET THINGS DONE

I need your No 1 vote for both Mayor
and Councillor

Authorised by John McGivern, 11 Newman St, St Marys, Tasmania

East Coast Phone & Communications

Installation & Maintenance
of Digital TV & Set Top Boxes
Telephone & Data Cabling
Commander Systems
Next-G Wireless Internet &
Mobile Phone Antennas



Vast Satellite Decoders
Digital TV & FM antennas
Installation & Tuning
CCTV - cameras

Sound System &
Speaker Cabling



30 years' experience, ACA licence
JOHN HERON

6372 2402 / 0409 959 121



St. Helens Electrical

Rod Shaw

Lic No. 933671

Domestic Commercial Industrial
Wiring and Repairs, Rewires,
Underground

Home Heating: Advisory, sales and
installation of heat pumps and fixed
heaters

Lighting Specialist: Interior and
exterior, advice, sales and
installation

0407 615 072

24798 Tasman Hwy St Helens 7216

HANNAH RUBENACH

*Working with you;
working for you!*

Vote 1: Mayor & Councillor



Ph 0417 528 088

Facebook – Hannah Rubenach for Mayor
Website – hannahrubenachformayor.com
Email – hannahrubenach11@gmail.com

Authorized by: Peter Rubenach, 36 Dalmayne Rd, Gray 7215

Nearly \$28m for roads in Lyons over 5 years

September 30th 2014

FEDERAL Lyons MP Eric Hutchinson has welcomed delivery of the Federal Government's \$2.1 billion Roads to Recovery program which will see nearly \$28m spent on roads in Lyons over five years.

Mr Hutchinson said that Deputy Prime Minister and Infrastructure Minister Warren Truss would be writing to councils in Lyons advising them of their full allocations for the 2014-2015 to 2018-2019 Roads to Recovery program.

"This is great news for local councils, residents and businesses," Mr Hutchinson said. "These funds will make a real difference in building roads, repairing streets and creating better access across our community."

Mr Hutchinson said that the Government was doubling Roads to Recovery payments to councils next year (2015-2016) to \$700m which would be a tremendous windfall for much-needed local road works.

Local councils in Lyons will be receiving the first of their funding allocations for the next five years in November. Roads to Recovery funding for the next five years to councils in Lyons includes:

- | | |
|--|---|
| ◆ Break O'Day \$2,646,098 (\$441,016 this financial year). | ◆ Meander Valley Council \$3,903,599 (\$650,600 this financial year) |
| ◆ Brighton Council \$956,322 (\$159,387 this financial year) | ◆ Northern Midlands Council \$4,022,294 (\$670,382 this financial year) |
| ◆ Central Highlands Council \$2,384,796 (\$397,466 this financial year) | ◆ Sorell Council \$1,713,238 (\$285,540 this financial year). |
| ◆ Derwent Valley Council \$1,443,498 (\$240,583 this financial year) | ◆ Southern Midlands Council \$2,633,528 (\$438,921 this financial year) |
| ◆ Glamorgan Spring Bay Council \$1,572,283 (\$262,047 this financial year) | ◆ Tasman Council \$854,248 (\$142,375 this financial year). |
| ◆ Kentish Council \$2,034,200 (\$339,033 this financial year) | ◆ West Tamar Council \$2,187,050 (\$364,508 this financial year) |
| ◆ Latrobe Council \$1,331,802 (\$221,967 this financial year) | |



The Roads to Recovery program enables councils to prioritise roads funding to invest in the infrastructure which keeps our drivers safe and strengthens economic growth, Mr Hutchinson said.

"Local councils can lodge their applications in October to allow payments under the new Roads to Recovery program to be made in November," he said.

State Government Funding Announcement – St Helens Indoor Ball Court Facility

September 26th 2014

On Wednesday September 24th, State Liberal Members for Lyons, Guy Barnett MP and Mark Shelton MP officially confirmed to the Council and community of Break O'Day, the Liberal party's pre-election promise of a contribution of \$250,000 towards the construction of an Indoor Ball Court Facility at the St Helens Sports Complex.

The announcement took place onsite at the St Helens Sports Complex with the Mayor, Councillors, Council Officers and representatives from key stakeholder user groups present.

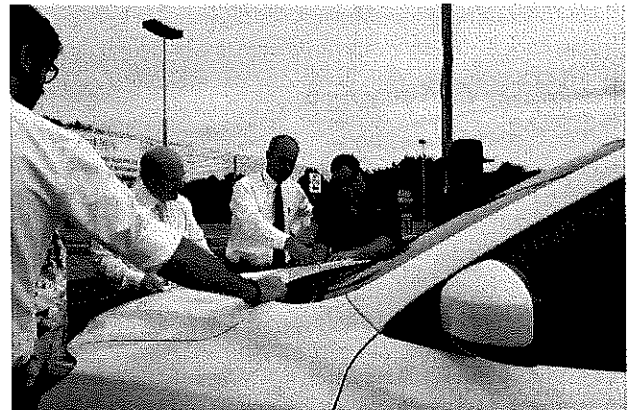
The purpose built indoor ball court facility will be available for use by individuals and groups from all over the municipality for a range of activities including netball, basketball, indoor soccer, badminton, etc. The multi-purpose facility will be able to seat up to approximately 400 people that could also be used for public events, performances, assemblies, etc.

This facility will be expanding and enhancing the facilities already on the site and will lift the level of participation for all grades of competition in various sporting activities, hopefully attracting regional sporting competitions to the area, as well as enhancing the health and well-being of the community.

Plans for the site were viewed and discussed, and comments made by some of the key stakeholders in relation to the consultation that has taken place. Community representatives congratulated Council on the consultation that has taken place with user groups of the proposed facility right from the project's inception. This gives the users ownership and pride in the purpose built facility.

All parties are very excited for this facility to be built in the Municipality and are keenly awaiting the opportunity for it to be open for business.

For further information please contact Mayor Sarah Schmerl on 0428 736 578.



Back to camera Matt Bennell, Principal St Helens District School, Mark Shelton MP, Guy Barnett MP, Jake Ihnen, Building Services Coordinator Break O'Day Council, Bob Hoogland, Acting General Manager Break O'Day Council

Many years ago in England, pub frequenters had a whistle baked into the rim, or handle, of their ceramic cups. When they needed a refill, they used the whistle to get some service. 'Wet your whistle' is the phrase inspired by this practice.



Leaver's Dinner Gowns

Visit

www.allbargainsanddiscounts.com

Great, affordable, stunning gowns, either short or long
Unbelievable prices

Go to the home page, click on the 'Wedding' category.

You'll find banners from a variety of wonderful stores showcasing stunning gowns. Just click on any banner and you'll be taken to the shop's website

OR

For more information email Dee at
allbargainsanddiscounts@gmail.com



2014 Local Government Elections

Candidates have been announced for elections being held for all 29 local government councils, with 476 individual candidates (338 men and 138 women) standing for councillor. 91 candidates are standing for mayor and 143 candidates are standing for deputy mayor. Candidate names are listed in alphabetical order for each election, but they will be rotated on ballot papers. Draws will determine the order of names on the first rotation of ballot papers. A notice listing all candidates will be placed in Tasmania's three daily newspapers on Saturday 4 October. Postal ballot packs will be delivered to electors between Tuesday 14 and Friday 17 October. The poll closes at 10am Tuesday 28 October. People with questions are invited to call 1800 801 701 or visit www.tec.tas.gov.au

For further information - Julian Type ELECTORAL COMMISSIONER
Andrew Hawkey DEPUTY ELECTORAL COMMISSIONER

Candidates in Break O'Day Council Elections 2014

Councillors - 17 candidates, 9 to be elected

Drummond, Janet	St Marys
Le Fevre, Barry	St Helens
Le Fevre, John	St Helens
Love, Kevin	St Helens
McGiveron, John Charles	St Marys
McGuinness, Glen	Binalong Bay
Mooney, Brian	Scamander
Osborne, Margaret	St Helens
Osborne, Matt	St Helens
Paulsen, Peter	Binalong Bay
Rubenach, Hannah	Gray
Southworth, Paul	Fingal
Speers, Debra	Fingal
Tucker, John Ewart	The Gardens
Tucker, Mick	St Helens
Warren, Timothy John	Four Mile Creek
Wright, Kylie	St Helens

Mayor - 4 candidates

McGuinness, Glen	Binalong Bay
Rubenach, Hannah	Gray
Tucker, Mick	St Helens
Warren, Timothy John	Four Mile Creek

Deputy Mayor - 6 candidates

Le Fevre, Barry	St Helens
Le Fevre, John	St Helens
McGiveron, John Charles	St Marys
Osborne, Margaret	St Helens
Paulsen, Peter	Binalong Bay
Wright, Kylie	St Helens

Returning Officer

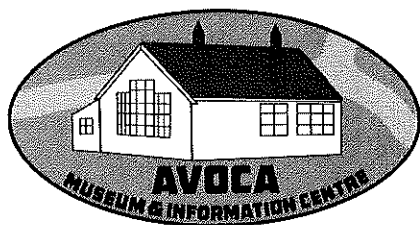
David Foulkes
87 George St
(POB 712)
Launceston Tas 7250

Issuing Place

Break O'Day Council
Georges Bay Esplanade
St Helens Tas 7216



Students from the Fingal Primary School sometime between 1956 and 1961, any information welcome. Photo courtesy of Murray Legro.

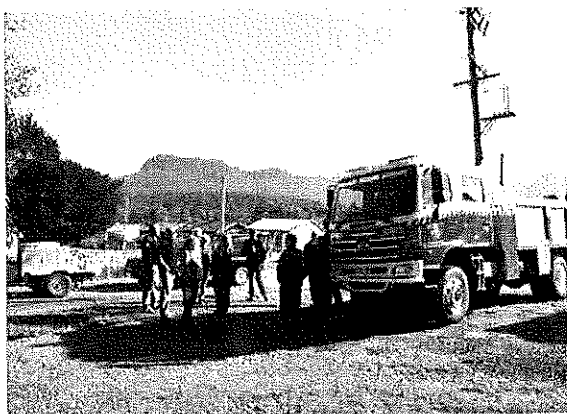


Avoca Museum and Information Centre

Old School Building
AVOCA TASMANIA 7213



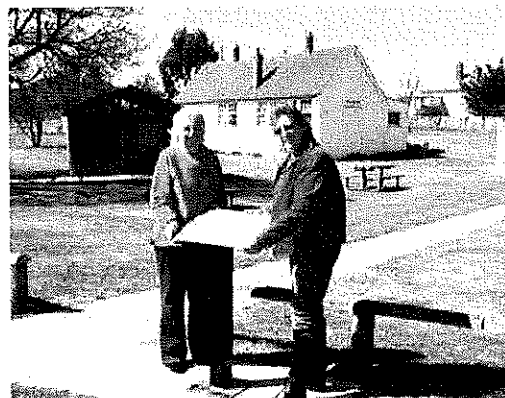
New Fire Brigade Team at Rossarden



The Tasmanian Fire Service has been training the new fire team at Rossarden. 15 volunteers have put their hands up to be either fully trained Brigade members or part of the support team in case of fire in or around the Rossarden area. The isolated community was left unprotected when the fire vehicle was removed two years ago but a small fire unit will be delivered in time for the summer. There are Parks + Wildlife and Forestry burn-offs planned from Storys Creek to Avoca in the next few months.



Beautiful flowers made by
Dehlana Phillips at the "Feel Good"
Workshop on September 13th...



Avoca Historic Plaques to finally become a reality. The Northern Midlands Council are preparing to install 14 Historic Plaques on a Town Walk at Avoca, telling stories about the old buildings and the characters who built the town which was named in about 1829. Helen Reynolds and Mary Knowles checked out one of the plaques that Mary obtained funding for 12 months ago.

The next **AMIC Market** is **Saturday** October 18th 2014 in the Hall
Contact Steve 6384 2188 or Prue 6384 2119 for a stall



Snapshot of Avoca gets National Focus

In 2005 the Avoca Primary students were involved with the "Snapshots of Remote Communities Project" and their works were exhibited in the National Museum in Canberra as well as at Launceston's QMAG.

The photographic exhibition is now on display at the
Avoca Museum and Information Centre
Open daily from 11am - 3pm (closed Tuesday and Thursday)

News from The Suncoast Gallery 27b Quail Street St Helens.

We welcome springtime as our hearts are lightened with bounding lambs and bulbs in full bloom.

We think of new beginnings, of expanding our horizons, optimism and hope.

To celebrate spring there are lots of glorious springtime goodies for you and your home. Pastel coloured cushions by Maureen Fisher, luxury shawls by Glenys Anderson and members have made cute butterflies, hair accessories, various artwork including watercolours, prints on canvas and hand painted silk scarves. There are new items that bring enthusiasm.

Elsie Jaensch makes the delightful children's learner books and fabulous little bags and other members have quite unique items too.

There are aprons and dress-ups for children and cards by so many people, you might find just what you're looking for.

Barbara Mellor makes yummy preserves and will supply exclusive Christmas Hampers. Hand towels, tea towels and table runners and beaded work to impress young and older are in the gallery so come in and feast your eyes.

Article and photos by Peggy Bogar



A WEED IS A PLANT THAT HAS
MASTERED EVERY SURVIVAL
SKILL EXCEPT LEARNING HOW
TO GROW IN ROWS. DOUG LARSON



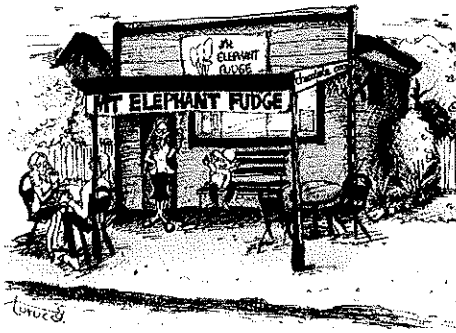
FROM SCRATCH

Vote 1 for Councillor **JANET DRUMMOND**



**Committed to community,
dedicated to progress.**

Authorised by: Rodney Drummond, 121 Lower Germantown Road, St Marys TAS 7215

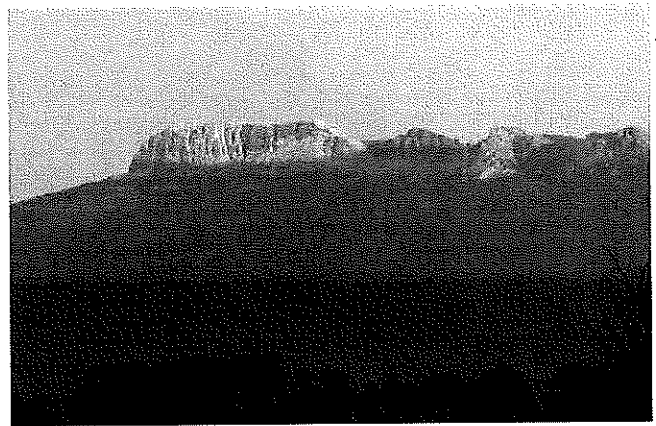


MT ELEPHANT FUDGE Trading Hours

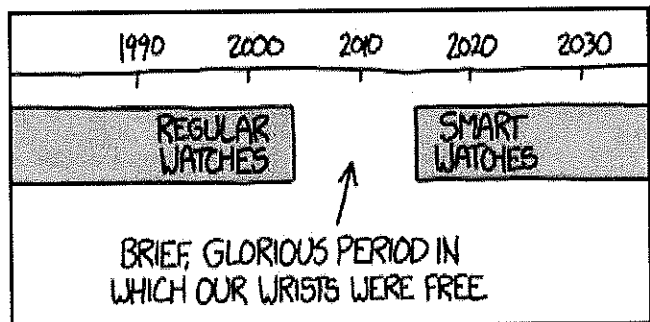
Thursday, Friday, Saturday, Sunday
10am - 4.30pm

I look forward to seeing you!!

*Please note - Mt Elephant Fudge will be
closed Sat 18th & Sun 19th October.*



Glyn Johnson's beautiful early morning photo.



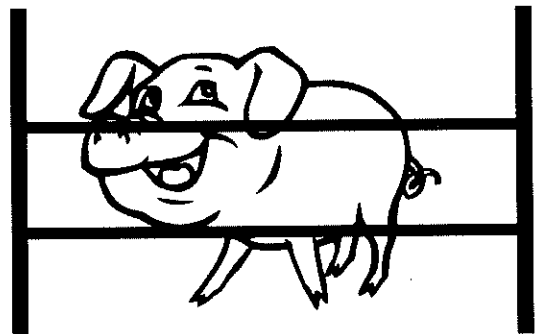
Bill Wilson's Pigs

Bill Wilson was a cattle man, been one for forty years;
There wasn't much he didn't know 'bout cows and bulls and steers.
He'd stayed with beef when it was cheap, he'd prospered when it boomed,
But there came a spell when the prices fell and the cattlemen were doomed.

So when in need old Bill took heed of accountants in the town
'Diversify!' the desk-men said. 'Diversify or drown.'
So Bill went home, sat on the throne, and he chewed a knotty twig;
He thought a bit, then he thought some more, then the answer came
'It's pigs!'

Now a lifetime raising Herefords is not the best of schools
For dealing with some boars and sows - they play by different rules.
But Bill was quietly confident, he knew where to begin.
He'd build, right then, a good strong pen to keep the beggars in.

He dug the holes, he sunk the posts, he tamped them good and hard;
Attached the rails with six inch nails - it was a splendid yard.
'This pen's a little beauty' cried Bill right from the heart
'I've built this sty full six feet high, with rails two feet apart.'
'I'll fill 'er up, come market day, with pigs 'till she is full.
The pig's not born that could bust this down, it'd stop a Brahmin bull.'



Bill went to town on sale day and he got a fantastic deal:
Three sows and a boar for not much more than you'd pay for a counter meal.
The road home was long and weary, and he didn't arrive 'till late.
It was black as pitch when he penned his pigs and firmly shut the gate.

When a man's as tired as Bill was, he sleeps if he's any sense
But when Bill's slipped under the covers, the pigs slipped under the fence.
Next morning Bill was heard to say, when he saw the empty sty,
'Well, strike me pink, you wouldn't think the sods could jump that high.'

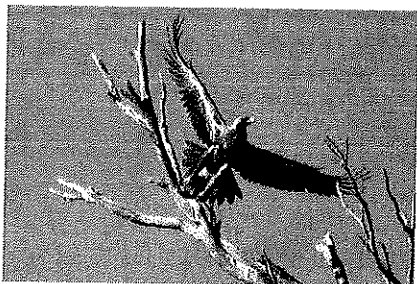
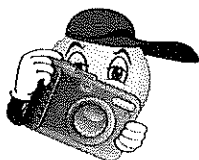
Bill Greer, Beauty Point

Valleys of Adventure

AVOCA • ROYAL GEORGE • ROSSARDEN • FINGAL • MANGANA • MATHINNA • UPPER ESK • CORNWALL • ST MARYS

GREATER ESK TOURISM

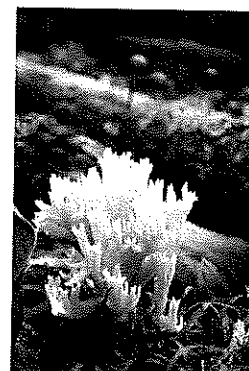
2014 Photographic Competition



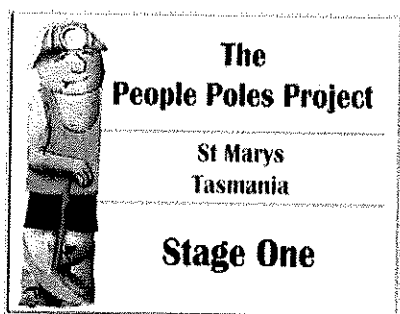
'Up and Away', last year's winning entry by Anne Hollingsworth

The Greater Esk Tourism photographic competition for 2014 has now closed. Entries are being judged by Tasmania's Master Photographer Owen Hughes, who will select 12 finalists and the overall winner. Finalists will be notified and their photographs displayed at Purple Possum, where the public can vote for the People's Choice Award. The winners will be announced at our annual cocktail party at Purple Possum in St Marys on Friday 14th November 2014 at 6pm. Cash prizes are \$250 for the winner, \$150 for 18 + under and \$100 for the People's Choice.

This year's theme is "People of the Valley". Entries are able to be viewed at www.fingalvalley.com.au



Some of last year's "Touring in the Valleys" entries

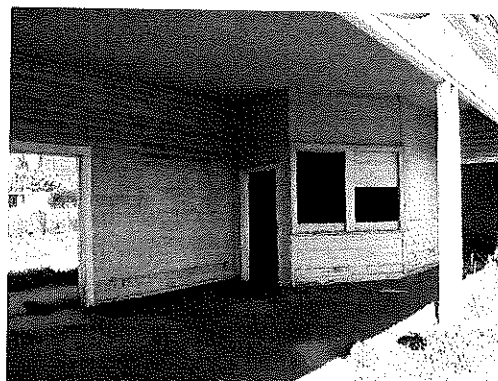


The St Marys People Poles Project is progressing with two new funding applications being prepared and submitted by GET's intrepid committee member Diana Foster and her working group.

Fingal Railway Station

Greater Esk Tourism, the Break O'Day Council, Fingal Valley Festival Committee, the Fingal Football Club, the Fingal On-Line Centre, Fingal Valley Neighbourhood House, Don River Railway and the Hobart Light Rail Lobby Group are all

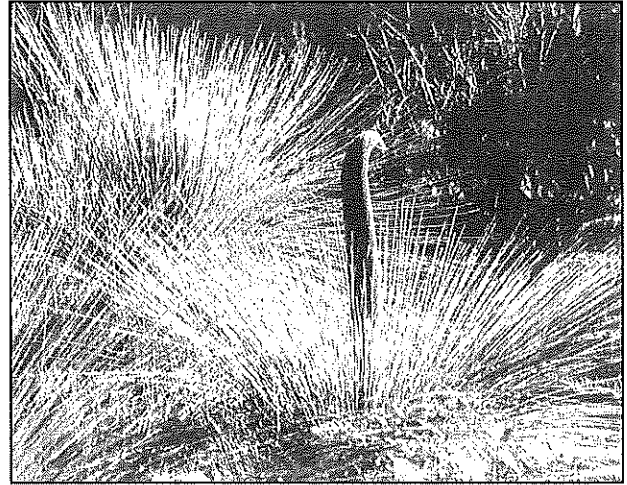
supporting the application to the Tasmanian Community Fund by the **Fingal District Progress Committee** to restore the Fingal Railway Station, and lobby the Government and TasRail to re-establish passenger trains on the Fingal line for special occasions such as the Fingal Valley Festival. Let's hope the application is successful; we will know in December.



The Winifred Curtis Scamander Reserve

*Named after the late Dr Winifred M. Curtis, OAM, M.Sc, PhD, Hon. DSc, FLS.
Tasmania's most esteemed botanist.*

A place of living history



What and where is it?

The Winifred Curtis Scamander Reserve is an 80 hectare private nature reserve located two kilometres south from Scamander township on Tasmania's east coast.

What makes the Reserve special?

It is the last remnant of dry sclerophyll bushland, marshland and heath land in the Break O'Day Municipality largely untouched since the time of European settlement in the 1820s.

What can one see there?

Until the disastrous December 2006 bushfire, over 150 species of native trees, shrubs and plants had been recorded. Most of these are gradually returning as are the 90 (approx) land and water-based bird species. Tranquil reflections on adjacent Henderson Lagoon are a bonus.

What facilities are available for visitors?

There are 7 kms of easy walking tracks, encompassing the whole spectrum of the Reserve's 16 ecosystems. The Old Coach Road enables access for high clearance vehicles to the Ford, a pleasant picnic and fishing site. There are three other picnic tables elsewhere.

What is NOT permitted?

- ♦ Off-road vehicles or trail-bikes
- ♦ Camping
- ♦ Picking flowers or damaging vegetation
- ♦ Fires or collection of fire wood
- ♦ Hunting or shooting
- ♦ Littering

Are dogs and horses allowed in the Reserve?

Dogs may be exercised along the tracks but they must be on a leash or under close sight control. Please do not let them foul the footpaths. Horses may only be ridden along the Old Coach Road.

What precautions are necessary before entering the WCS Reserve?

Visitors are advised to apply 'tropical' insect repellent containing DEET (diethyl tolu amide), to protect themselves against mosquitoes, biting ants, and marsupial ticks. Beware of falling limbs and sticks, particularly on windy days. Appropriate walking attire is recommended.

What does it cost to visit the WCS Reserve?

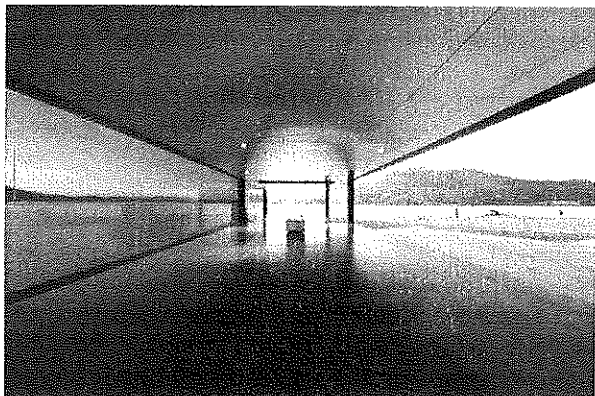
Nothing; entrance is free all year round. Donations are always welcome and can be sent to

The Secretary

POB 46

St Marys 7215 or to

The Chair, 35 Hammond St, Falmouth 7215.



Tasmanian architecture that makes you GASP

Janne Ryan, 12 September 2014

As MONA was emerging out of the Hobart ground in 2005, another project was brewing nearby on the Derwent Estuary waterfront, inspired by the 'MONA effect'.

'Even before MONA had opened, we knew there was going to be something really extraordinary across the bay,' Pippa Dickson, the CEO of the Glenorchy Art and Sculpture Park, recalls.

'We wanted to see how we could leverage this valuable, but at the time incredibly neglected, foreshore asset which was littered

with shopping trolleys and tyres and that kind of thing. We wanted to reverse a bit of a stigma around the pollution, the water quality particularly, and the mud flats were stinky.'

Over the years, this section of land with a three kilometre waterfront has been used by various industrial projects, including the construction of the nearby Bowen Bridge and the reconstruction of the Tasman arch, which collapsed in 1975. The popular Derwent Entertainment Centre was also built nearby in recent years.

In 2008, Ms Dickson started a round of intense community consultations and workshops with architects, out of which came a brief for the project and an invited competition. The winner was Hobart-based emerging architecture firm Room 11 Architects. The GASP Pavilions - GASP 1 and GASP 2 - are open air pavilions that sit within the landscape.

Driven by a very slim budget, Room 11 architect Thomas Bailey responded to the brief by seeing the estuary waterfront landscape as an amphitheatre, framed by Hobart's Mt Direction and Mt Wellington. Bailey saw the hills as 'walls'.

'I couldn't compete with this [landscape] by doing architectural gymnastics,' he says. 'Basically, we see our architecture as furnishing the landscape.'

The GASP project happened in two stages, with the GASP 1 pavilion and three kilometre walkway constructed first. This pavilion was made from timber, concrete and has a striking orange glass wall.

The GASP 2 pavilion sits on Wilkinson Point, an isthmus near the Bowen Bridge. Recently opened, this pavilion is at one end of a three kilometre walkway. For GASP 2, landscape architects McGregor Coxall worked with Room 11.

'There needs to be a destination - and it needs to be strong,' Mr Bailey explains.

Walking along the pathway places pedestrians in the face of the intense, noisy westerly winds that blow across the estuary.

However, as you approach the GASP 2 pavilion, a 40 metre long, four metre tall concrete wall shields pedestrians from the intensity of the wind, and the walkway becomes quiet.

'When you walk along the wall it is silent, and then you arrive in the pavilion, and it's more reverberative,' Mr Bailey says.

Playing with the acoustic and the elements, there are little holes in the wall of the pavilion, which allow wind to whistle through and children to peak out.

The most striking feature of this pavilion, which cantilevers over the bay, is its dramatic red glass wall.

The key material of both the pavilion and the courtyard is concrete, both new and re-used. Seats in the courtyard are recycled concrete pylons from an old unused jetty.

Dickson says that the community had always wanted to site to be a 'really sensorial experience'.

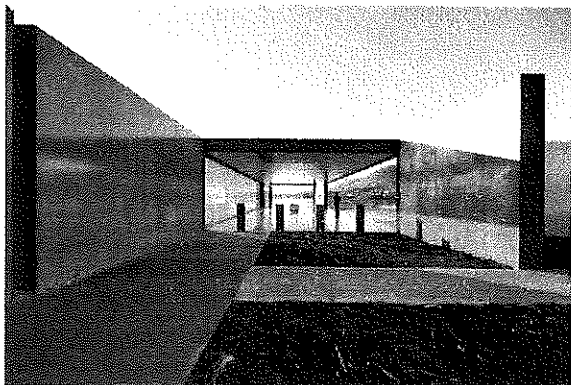
'There was this olfactory thing, so the smell of the wetland and the mud, then the water with the smell of the salt, the wind, and then the sounds.'

It was only after the building was finished, and after attending an all night winter solstice concert by Domenico de Clario, that Ms Dickson and the Room 11 team fully realised the power of the acoustic.

'We all just looked at each other and went "wow".'

GASP Stage 1 won the Australian Institute of Architects (AIA) 2013 National Award for Urban Design. GASP Stage 2 won the Urban Design Award 2014 AIA Tasmanian Architectural Award. It is a finalist in the AIA National Awards, to be announced in Darwin in November.

www.abc.net.au/radionational/programs/bydesign/architecture-that-makes-you-gasp/5739606



East Coast RC Flyers News - October 2014

The mild weather encourages interested people to drive the short distance to the club's flying site at Reids Rd. However, everyone who intends to watch and enjoy the flying activities, please be reminded that spring and summer also bring strong sea breezes and flying usually stops at around lunch time. If you do not want to arrive at an empty field, plan your visit in the morning and check the club's website for the next flying day at eastcoastrcflyers.org.au.

When the interest grows, the visitors ask questions such as: "What equipment do I need?" and "What does it cost?"

There is no straight answer as it depends on many factors. In the following is a brief outline of the basic electronic equipment required to control a model aeroplane.

A transmitter, commonly called a radio, can be a simple device costing around \$20, or a sophisticated piece of equipment that can set you back thousands of dollars. Generally said, \$100 for a transmitter and the corresponding receiver is sufficient to do the job.

Signals from the transmitter are translated by the receiver into data, telling a small electric motor (servo) to move its arm into a particular position. In most cases, you need four servos to control a model.

Everyone who has flown years ago will know that it was quite a hassle to keep other pilots off your frequency and not to interfere with your control. This problem is solved as any modern transmitter encodes the radio signal and pairs it with one particular receiver. In other words, several models can be in the air at the same time.

For decades, small petrol and diesel engines propelled the models until advancements in battery technology allowed the use of electric motors. There is no weight penalty using electric power and the opposite is true in many cases.

Kitting you out with a model aeroplane and basic electronic equipment does not have to cost more than \$300. Even if the unthinkable should happen, and you have to write-off your model plane after a crash, you can still use most of the electronic parts to equip the next model.

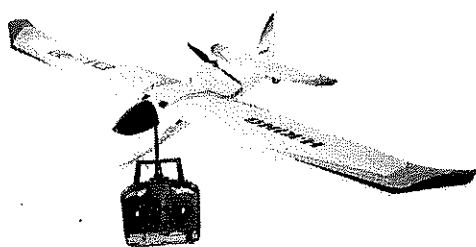
All images are courtesy of Angelika Weihrauch (permission has been obtained from all persons pictured)

Article by Manfred Weihrauch

Right: Manfred Weihrauch chases the first thermals with his 3 metre glider



Below: A typical trainer with radio transmitter



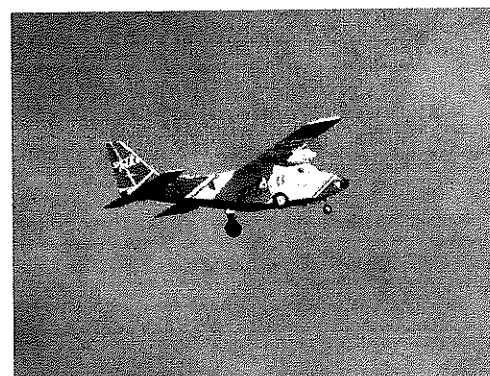
Right: Michelle Menz and Kole Bretag launch a trainer



Left: Jim Bowkett of Melbourne visits the club's flying field



Right: A good-looking Sky Mule in flight



JOHN MCGIVERON

**COUNCILLOR & DEPUTY MAYOR CANDIDATE
for BREAK O'DAY COUNCIL**



VOTE 1. JOHN MCGIVERON FOR COUNCILLOR

VOTE 1. JOHN MCGIVERON FOR DEPUTY MAYOR

**A VOTE FOR
COMMONSENSE, EXPERIENCE, STABILITY AND A LIFETIME OF
PASSION FOR ALL OF BREAK O'DAY**

**I WOULD APPRECIATE YOUR SUPPORT TO CONTINUE AS YOUR
FULL TIME REPRESENTATIVE**

Authorised by Ruth McGiveron, 11 Newman Street, St.Marys Tas.7215

John McGiveron

Candidate for Councillor and Deputy Mayor for Break O'Day Council

Name	John Charles McGiveron
Date of birth	September 30th 1943
Place of birth	St Marys Tasmania
Family details	Married to Ruth for 47 years; third generation resident of BODC, with two generations of local family members still in BODC (and proud of it)
Employment status	Retired Active BODC Councillor
Professional career	41 years in the Mining industry Maintenance Fitter (initial career) Plant Manager Mechanical Engineer in Charge Operations Manager (including coal marketing and sales)
Current community service	Councillor with BODC since October 2000 Chairman, Georges Bay Barway Committee since 2005 Charter Member, Lions Club of St Marys for 39 years, holding positions as President, Secretary, Treasurer and Board member President, Tasmanian Game Fishing Association Active Life Member, St Helens Game Fishing Club Member, St Helens Marine Rescue Member, St Marys Sports Club Council Representative on Council Road Safety Committee
Community Awards	June 2014, Lions Foundation fellow in recognition of outstanding service, dedication and loyalty to the Lions of Tasmania May 2014, Local Government Association of Tasmania - Outstanding Commitment and Service to Local Council, Long Service of a High Degree Citation

Professional Council-related interests

- ◆ Promotion of local sustainable developments to create employment and retain younger residents
- ◆ Public sector funding of key local infrastructure - Esk Highway and St Marys Pass, Musselroe to St Helens road upgrading and Georges Bay Barway/Sea access improvement (already secured \$2.4m)
- ◆ Development of St Helens commercial and recreational fishing industry, marina and boat servicing facilities
- ◆ Maximising the use of local contractors and suppliers to retain construction expenditures in the local economy (minimise external leakages).
- ◆ Continued upgrading of sporting venues in all towns in BODC
- ◆ General improvements in service levels in all our towns, including streetscapes
- ◆ Investigating re-establishment of Work's Depot back in the Fingal Valley
- ◆ Continuing to work to lower debt levels as per Council long term plan

I would appreciate your support in the upcoming Break O'Day elections with a number 1 Vote for Councillor, and a number 1 Vote for Deputy Mayor, but please, don't waste your democratic right - vote correctly for your preferred candidates.

I can be contacted at any time on 6372 2231 / 0409 545 674 or e: john.mcgiveron@bodc.tas.gov.au

John McGiveron, St Marys

Slippery banana study wins Ig Nobel prize

by Richard Valdmánis

A team of Japanese scientists earned the Ig Nobel prize in Physics for their paper titled "Frictional Coefficient under Banana Skin" which detailed the hazards of stepping on a banana peel.

Prizes were also awarded for studying what happens in the brains of people who see the face of Jesus in their toast, how infant poop can be used in the production of fermented sausages, and how pork strips can be stuffed into nostrils to stop nosebleeds.

Other Ig Nobel prizes went to researchers who measured the relative pain people suffer while looking at an ugly painting, investigating whether cat ownership can be mentally hazardous, and studying to see if people who routinely stay up late can be more psychopathic.

A personal favourite of Marc Abrahams, architect of the Ig Nobels, was a study by a team of Norwegian and German researchers who tested how reindeer react to seeing humans wearing polar bear costumes.

"I've never in my life met anyone who disguised himself as a polar bear to frighten a reindeer," Abrahams says.



SEYMOUR WALK & HISTORICAL DISCUSSION

Sunday October 19th 2014

Meeting at 10am

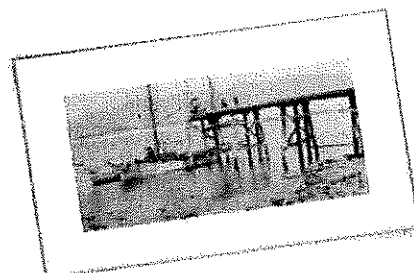
The St Patricks Head & Esk Valley Historical Society are holding a walk and historical discussion at the little historical village of Seymour.

Seymour has long history, particularly in coal mining that began way back in 1861, some twenty odd years before anything substantial began in the Fingal Valley.

Learn about the mining of coal under the sea and the many obstacles our ancestors battled in their construction of jetties to ship the coal to markets.

Our meeting place will be the old cemetery just a few metres off the Tasman Highway. You are welcome to join us for the walk and discussion - BYO lunch to enjoy along the way.

For more details phone Barry 6372 5752 or Henry 6372 5464



Break O'Day Welcome and Support Group

The following is the speech delivered by Mayor Sarah Schmerl at the Signing of the Refugee Welcome Zone Declaration in the St Marys Community Hall on October 4th 2014

'Today I have two questions to ask and to answer:

1. What is a refugee?
2. What is a Refugee Welcome Zone?

A refugee is a person who is outside their home country because they have suffered or feared persecution on account of race, religion, nationality, political opinion or because they are a member of a persecuted social category of persons or because they are fleeing a war.

A refugee welcome zone is an initiative of the Refugee Council of Australia. Today we are joining over 100 local government regions across Australia who have already made the commitment in spirit to welcome refugees.

But what does this actually mean? It means as a community we welcome newcomers and all they have to offer, whether it be as a visitor or resident. It also means a commitment to and enhancing cultural and religious diversity within the community. I believe these are already attributes we hold and this declaration is a way of saying, "Yes, we care".

The Refugee Welcome Zone Declaration does not have any obligations or legal responsibilities. It is simply a way for Local Government to voluntarily support the principles it contains.

Signing of this declaration is designed to promote harmony, social cohesion and respect for human rights in our community. It is a great way to demonstrate support for refugees and take a stand against racism and discrimination. It helps foster a culture of mutual respect and promotes an appreciation of cultural diversity.

In the end it's a piece of paper and some signs. But what it means is an open-hearted community sharing what we have here in our lucky country.'



Janet Drummond, Mayor Sarah Schmerl and Deputy Mayor Hannah Rubenach, photo by Peter Power-Lawrence

The Break O'Day Refugee Welcome and Support Group

Janet and Hannah are two of the founding members of the Break O'Day Welcome Group. The Break O'Day Refugee Welcome and Support Group has been set up by a group of dedicated community members seeking to support a compassionate approach towards people who seek asylum within the safety of our borders.

The purpose of this initiative is to welcome asylum seekers into our homes for respite and for time out, and to also help them feel welcome and to know that we are a safe and friendly community for people from all walks of life.

We have enormous support from our Council and members of the Break O'Day community, which shows we are a friendly and welcoming community. Our media officer Peter Power-Lawrence was interviewed by ABC Local Radio this week just prior to the signing of the Declaration.

The Break O'Day Refugee Welcome and Support Group meets monthly at the Anglican Church Hall in St Marys opposite the SES building, the provisional date for the next meeting is November 5th at 3pm. Please contact either Janet Drummond on 0404 562 320 or Hannah Rubenach on 0417 528 088. You can also visit our Facebook page - Break O'Day Welcome and Support Group - for up to date information.



Workshops - open to all!!

Statues with John McColl
Come along and have some fun

Day 1 Saturday November 22nd 2014
Day 2 Saturday November 29th 2014
Day 3 Sunday December 7th 2014

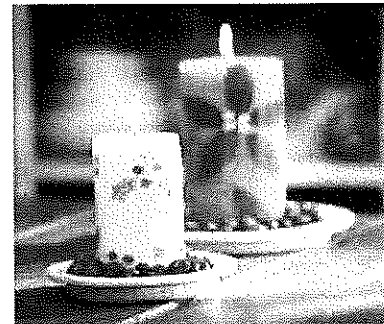
3 Days Workshop \$45 for BODRArts members & under 15yrs, \$50 for General Public



Candle making with River
Come along and learn the art of...

Saturday November 8th 2014
2 - 4pm
at River Willow ArtSpace
(opposite Mt Elephant Fudge & Purple Possum)

Workshop: \$10 for BODRArts members and under 12yrs, \$14 for General Public



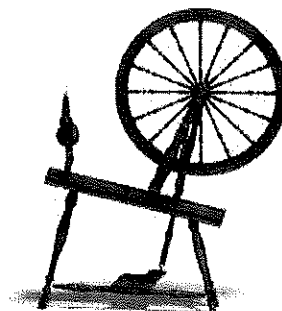
(light afternoon tea provided)

Bookings and enquiries - Michelle on 0407 046 865 or bodregionalarts@gmail.com

Spinning with River
Come along and learn the art of...

Day 1 Saturday October 25th 2014
Day 2 Sunday October 26th 2014
2pm - 4pm Ages: 9yrs – 110yrs
at St Marys Community Hall

2 Day Workshop:** \$32 for BODRArts Members & Under 15yrs, \$40 for General Public
****\$5.00 Discount - bring your own Spinning Wheel**



(light afternoon tea provided)

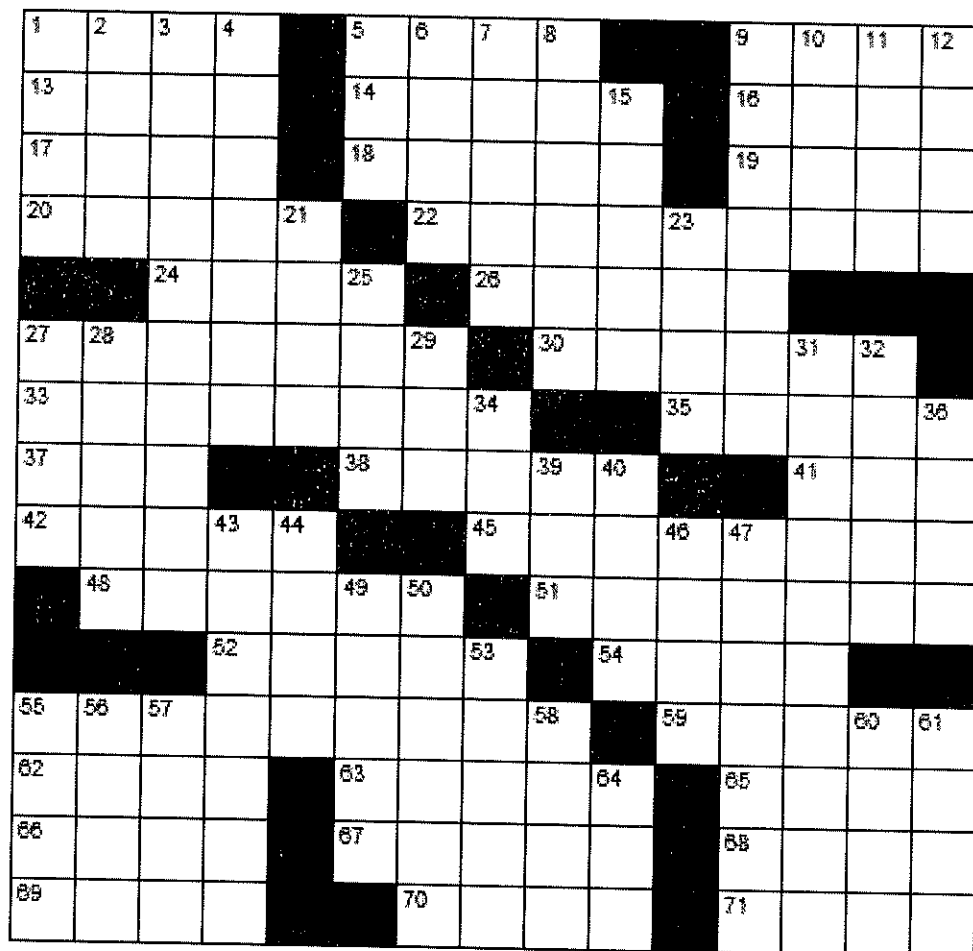
Bookings and enquiries call

Michelle on 0407 046 865 or bodregionalarts@gmail.com

****Limited number of wheels available for use at the workshop - bookings essential**

ACROSS

1. Awestruck
5. Cuts off
9. Falafel bread
13. Chocolate cookie
14. Absurd
16. Lion sound
17. Withdraw gradually
18. Photocopy company
19. Possesses
20. Impudent
22. The practice of scrapping something
24. Hastens (archaic)
26. Greetings
27. Set apart
30. Stoppage
33. Marsupials
35. Musical time
37. Excluding
38. Whinny
41. Russian fighter
42. Soft leather
45. Spyhole
48. Triviality
51. Foot lever
52. All excited
54. Satisfy
55. Sulfur
59. Scrawny one
62. Mentally irregular (slang)
63. Swelling under the skin
65. Fit
66. Atop
67. Send, as payment
68. French for "State"
69. Curve
70. Have the nerve
71. T T T T



DOWN

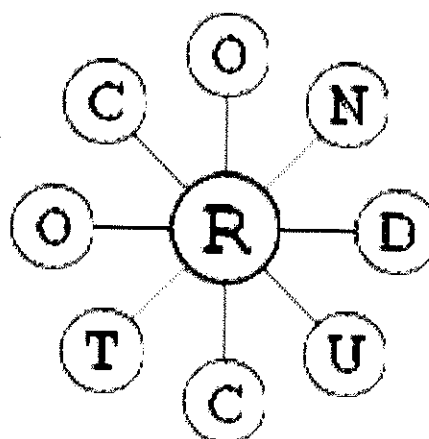
1. Seating sections
2. Region
3. A toy that fires pellets
4. They're found in the throat
5. 59 in Roman numerals
6. I I I I
7. Sear
8. Breathes noisily during sleep
9. Ask someone to marry you
10. Hawkeye State
11. A tart spicy quality
12. Backside
15. Glorify
21. Not nays
23. ___ du jour = Meal of the day
25. Render unconscious
27. Charged particles
28. Nozzle
29. An uncle
31. Intemperate
32. Overflow
34. Take in slowly
36. Curved molding
39. Obtain
40. Not his
43. A precious stone
44. F F F F
46. Legumes
47. A small axe
49. About a US quart
50. Worn away
53. Colonic
55. Whine with snuffling
56. Lasso
57. Computer symbol
58. Arab chieftain
60. Wings
61. Obtains
64. Consumed food

Solutions next issue

	3		6		8		7	
6								2
		9	2		4	6		
4		1	5		9	8		7
9		5	8		1	2		4
		3	1		2	7		
2								1
	9		3		7		2	

How many words can you find?
Each word must contain the central **R** and no letter can be used twice, however, the letters do not have to be connected. Proper nouns are not allowed, however, plurals are. Can you find the nine letter word?

Excellent: 38 words. Good: 31 words. Average: 25 words.



ST MARYS COMMUNITY HEALTH CENTRE

St Marys Community Health Centre

GP Surgery Hours:

Monday—Friday

8:50am-10:00am

10:00am-10:30am— Reception Closed

10:30am- 12:30pm

12:30pm-1:30pm— Lunch Reception Closed

1:30pm-2:45pm

2:45pm-3:15pm— Reception Closed

3:15pm- 4:30pm

DOCTORS ROSTER

Dr Cyril Latt

9/10/14- 24/10/14

Dr K. Rawnsley

10/10, 14/10, 21/10, 23/10 2014

Dr E. Reeckman

16/10/14- 17/10/14

PUBLIC HOLIDAY

Thursday 9/10/14- Launceston Show Day

For appointments phone: 6372 2111

AFTER HOURS CONTACT NUMBERS

Please phone

GP ASSIST ON- 1300 780 011

AMBULANCE 1800 008 008 or

EMERGENCY 000

ST MARYS COMMUNITY HEALTH CENTRE

6372 2111

Please RING before presenting after hours

Lifeline 131 114

Saving Lives, Crisis Support and Suicide Prevention

IMPORTANT INFORMATION TO PATIENTS

Please be aware that Dr Latt's Surgery is currently fully booked for appointments 1 week in advance as of 9/10/14

If you are unable to get a doctor's appointment at the time of ringing and you feel you need more urgent medical attention *please inform the reception staff* who will put you through to the Nurse on duty.

Daily Doctor appointments are not always available but if the need arises we can prioritise.

If in doubt— Call an Ambulance 000

Thank you for your cooperation

PATHOLOGY SERVICE-

NO PATHOLOGY SERVICE BETWEEN:

12:00-1:30pm or before 8:30am daily

If you require Pathology **before 8:30am** an appointment **must be made with the Nurses Station the day/night before** by phoning 6372 2111

SCRIPTS AND DOCTORS APPOINTMENTS

Please ensure doctors appointments are booked **PRIOR** to your medication/s running out or **IN ADVANCE** if you are attending this practice regularly.

PLEASE BE PATIENT waiting periods can apply to see the doctor. Scripts are unable to be done over the weekends, ensure you have enough medications in advance.

PHONE SCRIPTS

Please be aware **scripts are no longer able to be done over the phone.**

INR TESTS

A doctor's appointment is required if you are having an INR test. **Please let reception staff know when making your appointment that you are having an INR test.** This requires a 5 minute doctor consult.

NEW PHONE SYSTEM AT ST MARYS COMMUNITY HEALTH CENTRE & ST HELENS HOSPITAL

The St Marys Community Health Centre and St Helens Hospital and are two of the first sites across the Primary Health Sites THO North to take on the new change on VoIP Connect V phone system as of Tuesday 9/9/14.

Both sites have new contact numbers :

St Marys Community Health Centre

NEW Phone: 638 75555 Fax: 6372 2559

St Helens District Hospital

NEW Phone: 638 75570 Fax: 6376 5210

Fax numbers will remain the same



Thank you for your
co-operation during this
transition period.

ST MARYS COMMUNITY HEALTH CENTRE

Get the Most Out of Life

Practical skills for people with ongoing health conditions

6 week program (2.5 hours per week)

Venue: St Marys Community Health Centre

Time: 10:30am to 1:00pm

Dates: Fridays 24/10/14– 28/11/14

Cost: Gold coin donation (for tea & coffee)

To register phone:

Shan Williams

St Marys 6372 2111, St Helens 6376 5244
or 0439 765 244

- Suitable for anyone with a long term health condition.
- Supporters and carers *are welcome* to attend with you.

WHAT'S ON AT THE CENTRE Continued...

Relationships Australia– Leanne McMurtie for appointments please phone 1300 364 277

17 Oct **Social Worker**– Shan Williams. Please phone 6372 2111 for appointments.

Stepping Out Program 10:00am-2:00pm. Please phone Fiona Watts at LINC for details on 6376 2742.

20 Oct **Mental Health Clinician/ Case Manager**– For appointments please phone 1800 332 388 where a referral will be lodged for you.

TML Psychologist– Sam McCarthy. Please see your GP for a referral.

TLC Meeting (Tasmanian Lymphoedema Centre) 10:00am in the Day Room.

21 Oct **Mental Health Clinician/ Case Manager**– For appointments please phone 1800 332 388 where a referral will be lodged for you.

Child Health Session with Sue Gofton every Tuesday– Appointments only. Please phone 0428 136 381

22 Oct **Physiotherapist**– Please see your GP or Health Professional for a referral to the service.

Mental Health Clinician/ Case Manager– For appointments please phone 1800 332 388 where a referral will be lodged for you.

Day Centre– For details on the group please contact Hayley Gilbert 6372 2111

23 Oct **Social Worker**– Shan Williams. Please phone 6372 2111 for appointments

Anglicare Drug & Alcohol Counsellor. For appointments please see your GP for a referral.

24 Oct **Social Worker**– Shan Williams. Please phone 6372 2111 for appointments.

Stepping Out Program 10:00am-2:00pm. Please phone Fiona Watts at LINC for details on 6376 2742.

The Most Out Of Life– Chronic Disease Self Management Course 10am-12:30. Gold coin donation. Please phone Shan on 63722 111 for details.

WHAT'S ON AT THE CENTRE

9 Oct **PUBLIC HOLIDAY**– Launceston Show Day
Normal doctor's surgery hours will resume on Friday 10/10/14. Please see after hours contacts numbers (on reverse of page) for contact numbers during this time.

10 Oct **Social Worker**– Shan Williams. Please phone 6372 2111 for appointments.

13 Oct **Mental Health Clinician/ Case Manager**– For appointments please phone 1800 332 388 where a referral will be lodged for you.

TML Psychologist– Sam McCarthy. Please see your GP for a referral.

14 Oct **Child Health Session** with Sue Gofton every Tuesday– Appointments only. Please phone 0428 136 381

Tom Bain, Rae & Partners Lawyers. At the Community Health Centre Tuesday fortnights. For appointments please phone 6337 5555

Mental Health Clinician/ Case Manager– For appointments please phone 1800 332 388 where a referral will be lodged for you.

Continence Nurse. For appointment please see your GP or Health Professional for a referral

15 Oct **Social Worker**– Shan Williams. Please phone 6372 2111 for appointments.

Day Centre– For details on the group please contact Hayley Gilbert 6372 2111

16 Oct **Social Worker**– Shan Williams. Please phone 6372 2111 for appointments

EYELINES

Visit the St Marys Health Centre every 6-8 weeks. For appointments please phone: 1300 139 363.

All consultations Bulk Billed to Medicare

The Valley and East Coast Voice Inc. Guidelines

Opinions in any letters published are not necessarily those of the Editor or volunteer staff.

Our pages remain open to fair and honest criticism so that on all questions both sides may be presented, but any submissions containing personal attacks or hinting at libel or slander will not be accepted.

Please do not attack the editor, the paper or the authors of previous articles.

Letter writers will be given the chance to respond over a suitable period of time. Subjects may be closed at the editor's discretion. Please make sure of your facts. Do not write submissions just to let off steam. Articles most commonly published are those relating to current community issues.

Keep articles short, simple and to the point. Letters are restricted to 300 words or fewer.

The editor reserves the right to edit any submission for grammar, spelling or reduction in size where necessary.

All letters/emails must include your full name, address and phone number.

The Valley and East Coast Voice Inc. reserves the right at all times, without notice, to update, change or amend our guidelines.

All information is correct at time of printing.

Whilst we value and welcome community input, the Valley and East Coast Voice Inc. does not provide specific feedback regarding any decision made not to publish a submission.

Vol 47.10 solutions.

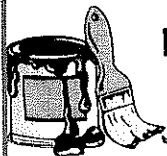
All words: cheque, chi, chin, chine, chit, chute, chutnee, eche, eh, etch, eth, ethic, ethnic, he, hen, hence, hent, het, hi, hic, hie, hin, hint, hit, hue, huic, hunt, hut, ich, inch, itch, niche, nth, quench, quiche, quitch, techie, **TECHNIQUE**, tench, teuch, the, thee, their, theine, then, thence, thin, thine, uh.

8	2	7	9	3	1	5	4	6
6	5	3	4	2	7	9	1	8
9	1	4	5	6	8	2	3	7
7	3	5	6	1	4	8	2	9
2	4	6	3	8	9	1	7	5
1	9	8	7	5	2	3	6	4
5	8	1	2	7	6	4	9	3
3	6	9	1	4	5	7	8	2
4	7	2	8	9	3	6	5	1

S	P	A	T	S	W	A	U	L	S	A	S	S
C	A	B	I	N	E	S	S	E	E	M	I	T
O	P	E	R	A	A	P	E	S	D	I	N	E
W	A	T	E	R	C	R	E	S	S	A	G	A
			L	A	I	C		O	B	T	A	I
O	U	S	T		T	N	T		N	E		
A	N	O	A		T	E	S	T	A	N	T	S
K	I	D	N	E	S		R	E	N	E	W	A
S	T	A	T	S		S	A	I	L		S	I
			A	N	S		G	A	D		S	T
H	E	L	M	E	T		I	T	E	M		
U	N	I	O		A	N	T	H	R	A	C	I
M	E	N	U		R	E	A	L		C	O	B
O	M	E	N		V	E	T	O		A	L	I
R	A	N	T		E	D	E	N		W	A	S

St Marys Painter

Painting & Decorating at realistic prices



(Special pensioner's rates)

No job too large or too small.

Bernard Harris

Ph 6372 2942



**Accredited Master Building Association
(BSA Licence No: 1120307)**

Harris Funerals

St Helens, Bicheno & Fingal Valley

We are here when you need us.

Burial or cremation, traditional or unique funeral services available.

Office & Chapel:

46 Tully Street St Helens

6376 1153 ~ 0418 133 420

tamara@harrisfunerals.com.au

Member of the
Australian Funeral Directors' Association



Tip locations and opening hours

Ansons Bay, Long weekend
 Mondays 12 - 4 *Scamander, Coach Street.*
 Wed & Sunday 12 - 4 Tues & Thurs 10 - 4
 Sunday 2 - 5
Fingal, Mathinna Road.
 Tues & Thurs 10 - 4 *St Helens, Eagle Street.*
 Sunday 2 - 5 Open 7 days 10 - 4
Pyengana, Tasman Hwy. *St Marys, Gray Road.*
 No builders' waste please. Tues & Thurs 10 - 4
 Wednesday 9 - 1 Sunday 2 - 5
 Sunday 2 - 5

Meals on Wheels ~ 0488 384 344

October 13	Karl Balzer
14	Trish Pike
15	Lundy Vosper
16	Sonya Allison
17	Drew Adam
20	Pam Bretz
21	Valmai Spencer
22	Lulu Keady
23	Heather Griffiths
24	Lorraine Gill

Tasmanian Lost Pet Register

[https://www.facebook.com/
 e: tasmanianlostpetregister@gmail.com](https://www.facebook.com/tasmanianlostpetregister@gmail.com)



Missing from Central Devonport

Posted October 3rd 2014

Missing from our backyard in central Devonport tonight between 7-8:30pm, our pure bred blue staffy 2 years old, her name is Blasko. Microchipped, desexed and registered. Please contact me if you know anything.

<https://www.facebook.com/fredeoo?fref=photo>

Emergency services

AURORA Emergency 132004
Carers for Wildlife St Marys 6372 2973
0417 017 105
Crimestoppers 1800 333 000
Poisons Information 131126
POLICE Emergency 000 & Enq 131444
SES Emergency 132500
TFS Emergency 000 & Enq 1800 000 699

Church Services

Catholic Parish of St Marys Sr. Lorraine Groves
 6372 2252 / 0409 172 741
1st Sunday Mass
 St Helens Vigil 6pm
 Bicheno 9am
 Fingal 11.30am
2nd Sunday Liturgy
 St Helens Vigil 6pm
 St Marys 9am
 Bicheno 9am
 Fingal 9.30am
3rd Sunday Mass
 St Helens Vigil 6pm
 St Marys 9am
 Bicheno LWC 9am
4th Sunday Liturgy
 St Helens Vigil 6pm
 St Marys 9am
 Bicheno 9am
 Fingal 9.30am
5th Sunday Mass
 St Helens Vigil 6pm
 St Marys 11am
 Bicheno 9am

St Marys Salvation Army
 Sunday Joy 12.30pm
 This is a bring-and-share lunch followed by a great time of friendship and fellowship. You are very welcome to join us and share our JOY!
 Tuesday JAM 3-5pm every Tuesday except school holidays.
 Envoy Melanie Norton
 0409 838 816

Break O'Day Anglican Parish 6372 1144 or PO Box 143, St Helens Tas 7216
 St Helens 9.30am Sunday
 5th Sunday Combined Service with Uniting Church 10.30am
 St Marys 10am Sunday
 Pyengana Please phone for service times
[facebook.com/anglicanbod](https://www.facebook.com/anglicanbod)

Anglican Parish of Northern Midlands
 Avoca 11am 2nd Sunday
 Fingal 2pm 2nd Sunday
 Mathinna 2.30pm 4th Sunday
 Ross 10am 5th Sunday
 Campbell Town 9am

Break O'Day Uniting Church
 The Manse 6376 2405
 St Helens 9am
 Fingal 11.15 am

September rainfall from Reon Johns

4th	Trace	Fog
6th	Trace	Fog
9th	6.4	Rain
18th	7.00	
20th	8.8	
25th	2.2	
29th	2.2	

ST MARYS SPORTS (and SOCIAL) CLUB

Gray Road St Marys

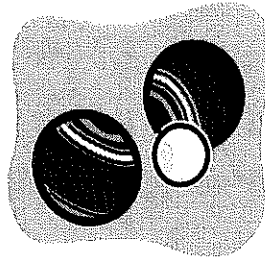
Thursday 5.30 - 7.30 Friday 5.30 - 8.30.

Sunday 1.30 - 4.30.

BOWLS NEWS

Was great to see so many faces at practice last week, also a couple of new juniors signing up. Our first game is this Saturday at home against St Helens.

Players please don't forget to bring a plate for afternoon tea.



New to Bowls?

Any new members wanting to learn are most welcome to join in at practice on Thursdays from 5.30pm. You're also most welcome to spend time practising on Sundays during club opening hours. We will try to have someone there to guide you.

NAN STEWART ANNUAL MEMORIAL DAY

Congratulations to St Marys bowlers for taking out the comp this year!!

GOLF NEWS

With the fantastic weather we are having it's time to dust off your buggy and get swinging.

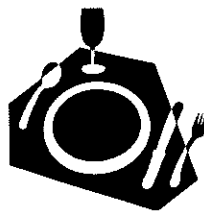
Why not get down to the club on a Sunday and have a go!
Tee off is at 12.30pm, men and women are welcome to join in these fun days.

Friday night is happy hour at the club.

Non members are most welcome. Jag the Joker has reached a whopping **\$580**. It must go off fairly soon, Rod Weyer had a chance last week but unfortunately no cigars.

Good to see Macca take home the carton from the members draw.

Friday 10th October
Curried scallops or bacon and scallop
kebabs plus dessert
BOOKINGS ESSENTIAL
SMS 0417 010 648
\$20 per person



Club Membership is due.
\$25pp

Sports Membership (those who participate in social bowls or golf) \$60pp

Junior Sports \$40 .

President
Bobby Harwood 6372 2445

Secretary
Annette Wines 0417 010 648

Licensee/treasurer
Jim Turner 6372 2441



ST MARYS IGA SUPERMARKET

*In the centre of town, at
the heart of the community.*

38 Main Street

Ph/Fax 6372 2240 Butcher 6372 2274

Monday to Friday 8-6 Saturday 8-12



Specials from 8th - 14th October 2014

Butchery	per kg
Round steak	8.99
Netted boneless leg of lamb	12.99
Nichols chicken drumsticks	2.99
Pandani corned silverside	7.55
Lamb bbq chops	9.99

Shelves

Moccona classic coffee bonus 250g	9.99
Kleenex cottonelle toilet tissue 12pk	5.75
IGA cordial syrup 2L	1.99
Friskies dry cat food 1kg	3.99
Bertolli 5 bros pasta sauce 500ml	2.99

Coolroom and Freezer

Kraft cheese block 1kg	8.99
Devondale dairy soft butter tub 500g	3.69
McCain super fries 1kg	2.99
Ingham breast nuggets tempura 400g	4.99
Papa Gs family pizza margherita/pepperoni 410g	3.99

Specials from 15th - 21st October 2014

Butchery	per kg
Beef mince	9.99
Nichols breast fillets	9.99
Blade steak/roast	9.99
Leg of lamb	9.99
Ingham chicken necks	3.55

Shelves

Juicy isle toppings 375ml	2.49
Nescafe blend 43 coffee 150g	6.99
Arnott's family assorted biscuits 500g	2.99
Vita c blackcurrant syrup 750ml	4.99
Schmackos strapz 180g	3.99

All only \$2 ea

Schweppes/Pepsi soft drink 2L	1.79
Arnott's shapes/clix/savoy 160-250g	1.99
Nanda pasta 500g	.99
Sunsilk shampoo/cond 200ml	1.99
Soph dish washing liquid 1L	1.69

Swedish Baked Potatoes (Hasselbackspotatis)



- 8 medium potatoes, peeled
- 1 1/2 ounces butter, melted
- 3 garlic cloves, crushed (mixed with the butter)
- 1 1/2 teaspoons salt
- pepper
- 1 1/2 ounces parmesan cheese (optional)
- 2 tablespoons fresh whole wheat bread crumbs

Cut the potatoes into thin slices 3/4 way through, leaving a small uncut portion of the potato (fan like). Rinse after slicing this way to remove extra starch so that the slices don't stick to each other. (Put chopsticks on either side of potato so that you don't cut all the way through when slicing.)

Put half the butter and garlic in an ovenproof dish and place the potatoes in the dish. Sprinkle with salt & pepper.

Drizzle with remaining butter and garlic.

Bake in 425°F oven (takes about 40 minutes, depending on the size of the potatoes).

Baste occasionally with the butter in the dish.

After 30 minutes sprinkle with the cheese and bread crumbs - do not baste after putting on the cheese and crumbs.

Other toppings could be bacon or chopped green onion, and sour cream or yoghurt can be added when served.

Printed and published by
THE VALLEY AND EAST
COAST VOICE INC.
12 GROOM STREET
ST MARYS TAS 7215.

